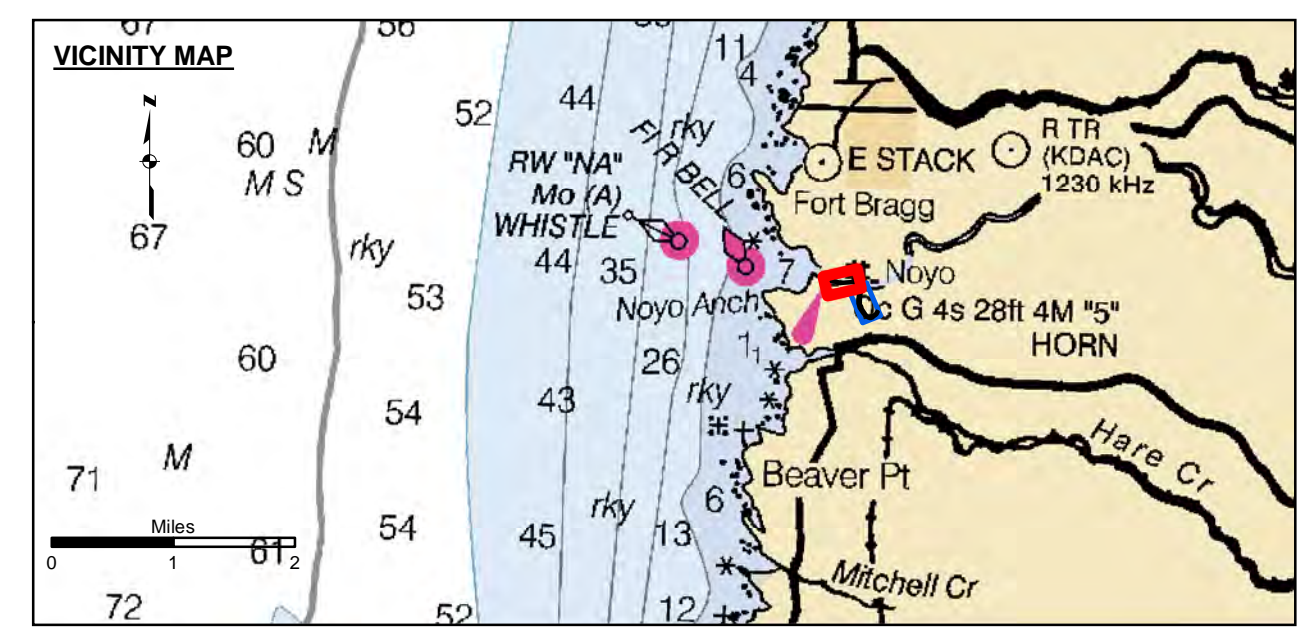


**PRELIMINARY ISSUE**  
 THIS PLAN ISSUED FOR  
 ADVANCE INFORMATION ONLY

Angle Point	Easting	Northing *
01	6050286.98	2286973.23
02	6050907.48	2286914.23
03	6050931.58	2286815.23
04	6051001.41	2286820.12
05	6051403.98	2286848.63
06	6051499.68	2286855.73
07	6051597.98	2286841.53
08	6051685.28	2286793.03
09	6051752.98	2286719.43
10	6051802.88	2286632.53
11	6051831.38	2286535.83
12	6051843.48	2286433.23
13	6051831.88	2286287.43
14	6051787.78	2285974.53
15	6051805.28	2285840.53
16	6051835.58	2285744.63
17	6051877.28	2285652.73
18	6051923.38	2285563.03
19	6051977.78	2285479.33
20	6052040.08	2285401.03
21	6052077.88	2285367.63
22	6052122.78	2285346.23
23	6052170.88	2285332.93
24	6052235.18	2285325.83
25	6052335.48	2285377.23
26	6052421.78	2285443.43
27	6052493.18	2285560.83
28	6052572.18	2285516.13
29	6052509.68	2285405.83
30	6052456.78	2285338.13
31	6052387.58	2285269.13
32	6052320.38	2285222.73
33	6052252.28	2285185.23
34	6052191.88	2285196.73
35	6052097.88	2285228.63
36	6052013.38	2285283.03
37	6051939.48	2285350.73
38	6051871.88	2285424.23
39	6051810.38	2285502.53
40	6051752.68	2285584.43
41	6051707.18	2285673.83
42	6051672.88	2285767.93
43	6051650.58	2285865.63
44	6051643.88	2285965.93
45	6051694.48	2286029.73
46	6051684.98	2286055.63
47	6051665.48	2286074.23
48	6051637.58	2286035.43
49	6051600.38	2286063.83
50	6051556.58	2286116.13
51	6051495.28	2286140.33
52	6051410.88	2286148.23
53	6051008.42	2286719.98
54	6050938.58	2286715.23
55	6050896.48	2286713.23
56	6050275.88	2286876.23

Angle Point	Easting	Northing *
C01	6050286.98	2286924.23
C02	6050902.98	2286763.23
C03	6050935.18	2286765.23
C04	6051005.08	2286769.23
C05	6051407.48	2286798.23
C06	6051497.48	2286797.23
C07	6051577.28	2286778.23
C08	6051642.88	2286738.23
C09	6051695.28	2286877.23
C10	6051735.08	2286803.23
C11	6051758.18	2286520.23
C12	6051768.98	2286433.23
C13	6051757.48	2286293.23
C14	6051715.78	2285969.23
C15	6051726.38	2285870.23
C16	6051734.08	2285824.23
C17	6051771.38	2285709.23
C18	6051814.98	2285618.23
C19	6051866.88	2285532.23
C20	6051924.78	2285451.23
C21	6051976.68	2285391.23
C22	6052004.68	2285360.23
C23	6052045.68	2285325.23
C24	6052110.38	2285287.23
C25	6052193.78	2285262.23
C26	6052243.68	2285260.23
C27	6052295.78	2285283.23
C28	6052361.48	2285322.23
C29	6052414.98	2285370.23
C30	6052468.78	2285428.23
C31	6052532.68	2285538.23



Federal Navigation Channel	Beacon, General	<b>Contours</b>
Shoaling Area	Obstruction Point	
Placement Area	Navigation Buoy	-10
Anchorage Area	Navigation Buoy	-9
Wreck Area	Shoalest Sounding*	-8
Submerged Wreck		-7
Angle Point		-6

**NOTES:**  
 HORIZONTAL COORDINATE SYSTEM: NORTH AMERICAN DATUM OF 1983 (NAD83), PROJECTED TO THE STATE PLANE COORDINATE SYSTEM (SPCS), CALIFORNIA ZONE II. DISTANCE UNITS IN U.S. SURVEY FEET.  
 VERTICAL DATUM: SOUNDINGS ARE SHOWN IN FEET AND INDICATE DEPTHS BELOW MEAN LOWER LOW WATER.  
 THE INFORMATION DEPICTED ON THIS MAP REPRESENTS THE RESULTS OF A SURVEY CONDUCTED ON THE DATE INDICATED AND CAN ONLY BE CONSIDERED TO REPRESENT THE GENERAL CONDITION EXISTING AT THAT TIME.  
 PLANE GRID, BEARING AND COORDINATES ARE BASED ON THE STATE OF CALIFORNIA COORDINATE SYSTEM, LAMBERT CONFORMAL PROJECTION, ZONE II NAD 83, CALIFORNIA, AS DESCRIBED IN SPECIAL PUBLICATION NO. 235, PUBLISHED BY NATIONAL OCEAN SURVEY. BASE MAPS ARE USDA NAIP 2010.  
 \*SHOALEST SOUNDING PER QUARTER PER REACH

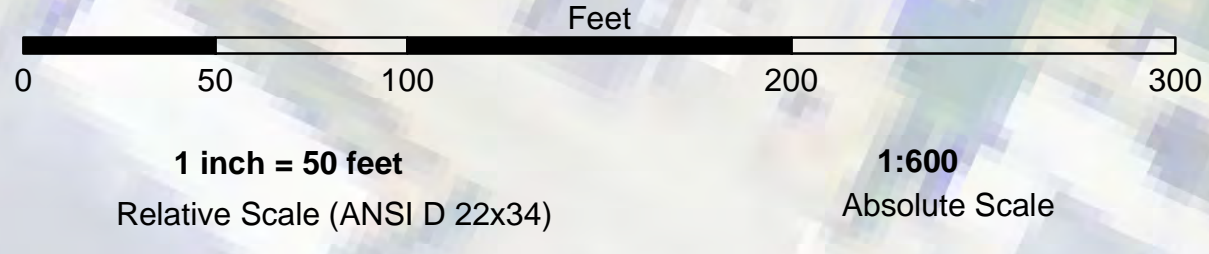
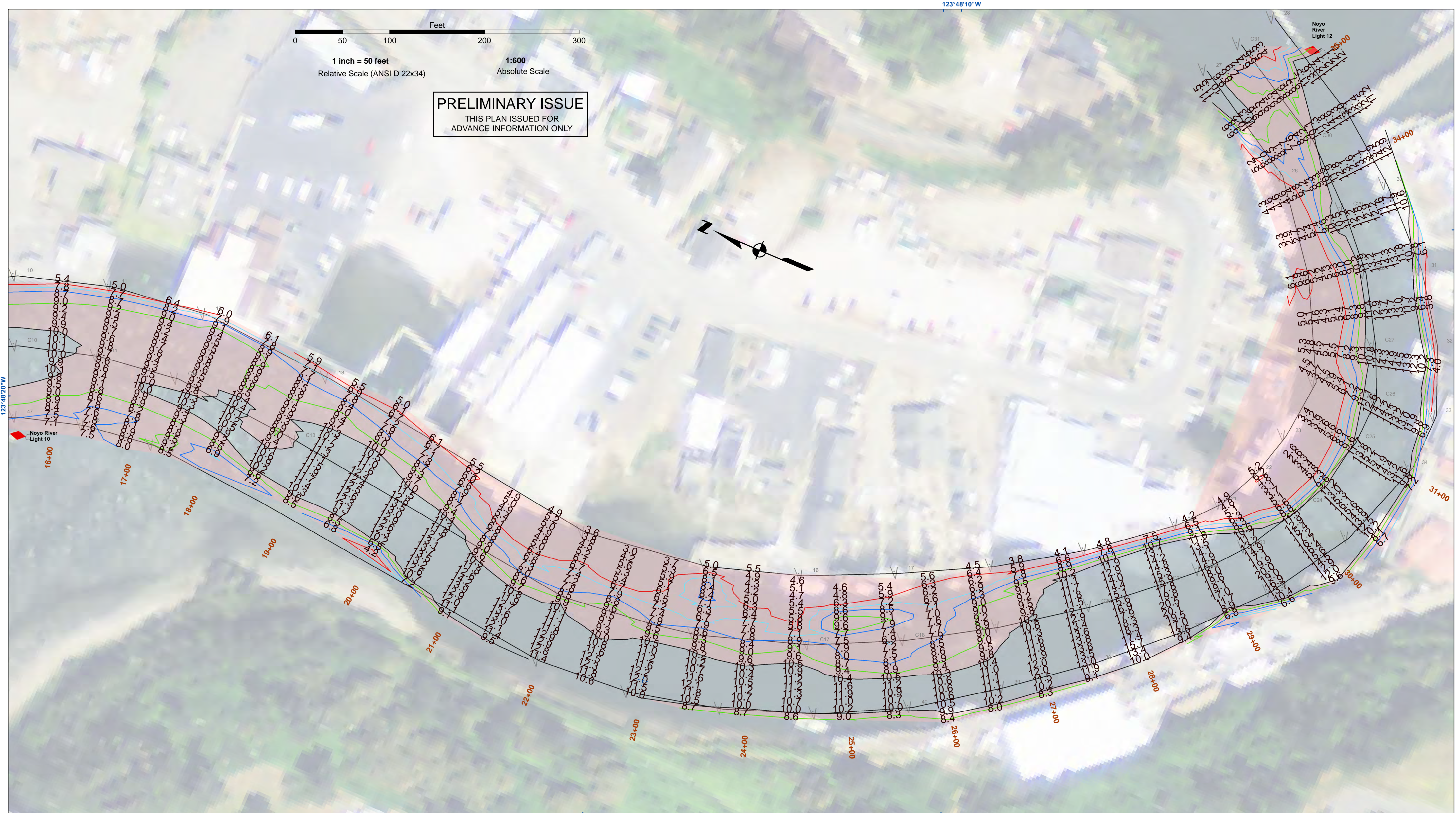
DRAWING NOT TO BE USED FOR NAVIGATION. ONLY CHANNEL CONDITION AT DATE OF SURVEY. THE LOCATION OF ALL NAVIGATION AIDS ARE BASED ON INFORMATION PROVIDED BY THE U.S. COAST GUARD. BUOY LOCATIONS REPRESENT THE POSITION OF THE SINKER ONLY. SOUNDINGS FOR THE OUTSIDE CHANNEL (100FT. WIDE) TAKEN BY FATHOMETER; THE INSIDE CHANNEL (60 FT. WIDE) TAKEN BY LEADLINE, AND ARE SHOWN TO THE NEAREST FOOT AND TENTHS OF A FOOT. SOUNDINGS ARE BASED ON THE DATUM OF MEAN LOWER LOW WATER AT THE LOCALITY.  
 THE PROJECT DEPTH IS 10 FEET.  
 VERTICAL CONTROL: B.M. "BAKER", COE DISK, 13.88' MLLW NGVD 29 DATUM  
 HORIZONTAL CONTROL: COAST GUARD D-BEACON

**DISCLAIMER:** The United States Government furnishes these data for informational purposes only. The data represents the results of a survey conducted on the date indicated and can only be considered to represent the general condition existing at that time. The user is responsible for the accuracy of the data for other than its intended purpose. The user is responsible for the accuracy of the data for other than its intended purpose. The user is responsible for the accuracy of the data for other than its intended purpose.

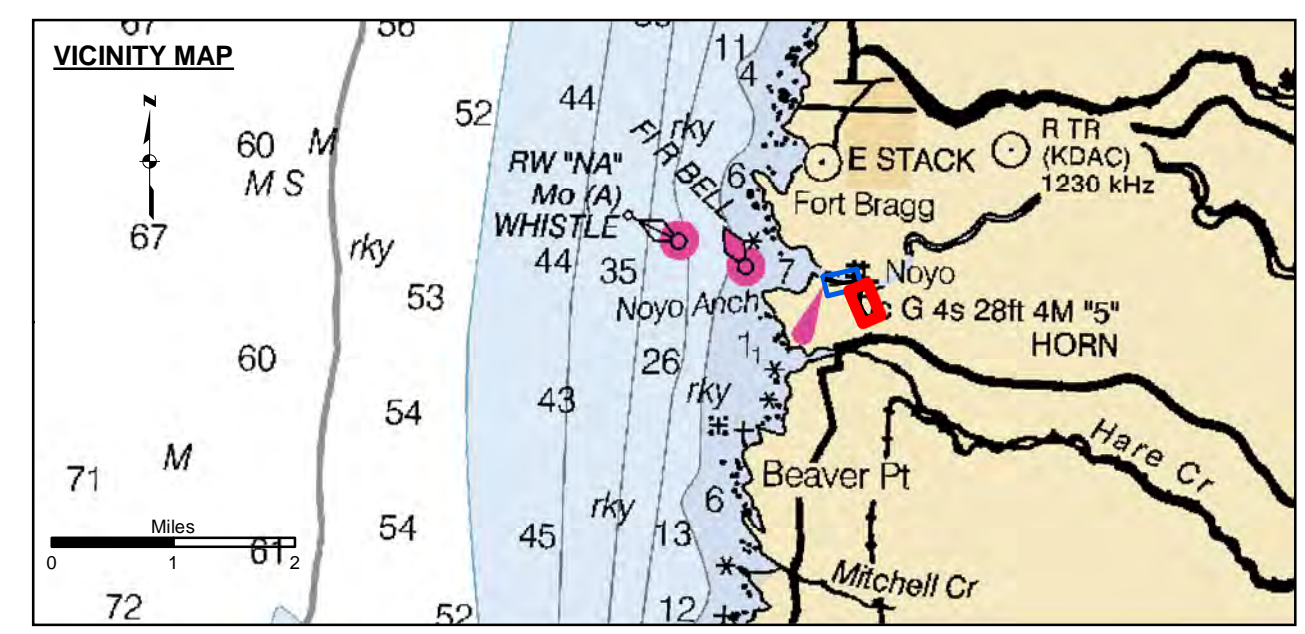
Chart Date:	Jul 19, 2019
Designed by:	PDT
Plotted by:	PDT
Checked by:	PDT
Drawn by:	PDT

CALIFORNIA  
**NOYO RIVER**  
 CONDITION SURVEY  
 01 JULY 2019

**Sheet Reference Number**  
 1 of 2



**PRELIMINARY ISSUE**  
 THIS PLAN ISSUED FOR  
 ADVANCE INFORMATION ONLY



- Federal Navigation Channel
- Shoaling Area
- Placement Area
- Anchorage Area
- Wreck Area
- Submerged Wreck
- Angle Point
- Beacon, General
- Obstruction Point
- Navigation Buoy
- Navigation Buoy
- Shoalest Sounding\*
- Contours**
- 10
- 9
- 8
- 7
- 6

**NOTES:**  
 HORIZONTAL COORDINATE SYSTEM:  
 NORTH AMERICAN DATUM OF 1983 (NAD83), PROJECTED TO THE STATE PLANE COORDINATE SYSTEM (SPCS), CALIFORNIA ZONE II. DISTANCE UNITS IN U.S. SURVEY FEET.  
 VERTICAL DATUM:  
 SOUNDINGS ARE SHOWN IN FEET AND INDICATE DEPTHS BELOW MEAN LOWER LOW WATER.  
 THE INFORMATION DEPICTED ON THIS MAP REPRESENTS THE RESULTS OF A SURVEY CONDUCTED ON THE DATE INDICATED AND CAN ONLY BE CONSIDERED TO REPRESENT THE GENERAL CONDITION EXISTING AT THAT TIME.  
 PLANE GRID, BEARING AND COORDINATES ARE BASED ON THE STATE OF CALIFORNIA COORDINATE SYSTEM, LAMBERT CONFORMAL PROJECTION, ZONE II NAD 83, CALIFORNIA, AS DESCRIBED IN SPECIAL PUBLICATION NO. 235, PUBLISHED BY NATIONAL OCEAN SURVEY.  
 BASE MAPS ARE USDA NAIP 2010.  
 \*SHOALEST SOUNDING PER QUARTER PER REACH

DRAWING NOT TO BE USED FOR NAVIGATION. ONLY CHANNEL CONDITION AT DATE OF SURVEY.  
 THE LOCATION OF ALL NAVIGATION AIDS ARE BASED ON INFORMATION PROVIDED BY THE U.S. COAST GUARD. BUOY LOCATIONS REPRESENT THE POSITION OF THE SINKER ONLY.  
 SURVEYED BY THE CORPS OF ENGINEERS.  
 SOUNDINGS FOR THE OUTSIDE CHANNEL (100 FT. WIDE) TAKEN BY FATHOMETER; THE INSIDE CHANNEL (60 FT. WIDE) TAKEN BY LEADLINE, AND ARE SHOWN TO THE NEAREST FOOT AND TENTHS OF A FOOT.  
 SOUNDINGS ARE BASED ON THE DATUM OF MEAN LOWER LOW WATER AT THE LOCALITY.  
 THE PROJECT DEPTH IS 10 FEET.  
 VERTICAL CONTROL:  
 B.M. "BAKER", COE DISK, 13.98' MLLW NGVD 29 DATUM  
 HORIZONTAL CONTROL:  
 COAST GUARD D-BEACON

**DISCLAIMER:** The United States Government furnishes these data for informational purposes only. The user is responsible for the results of any application of the data for other than its intended purpose. The user is responsible for the results of any application of the data for other than its intended purpose. The user is responsible for the results of any application of the data for other than its intended purpose. The user is responsible for the results of any application of the data for other than its intended purpose.

Prepared Under the Direction of	Chart Date:
LT COLONEL C.E. CUNNINGHAM	Jul 19, 2019
Submittal:	Designed by:
Hydro Survey Team Leader	PDT
Recommended:	Plotted By:
Chief, Hydro Survey Section	PDT
Approved:	Checked By:
Chief, Construction Branch	PDT
	Drawn by:
	PDT

CALIFORNIA  
 MENDOCINO COUNTY  
**NOYO RIVER**  
 CONDITION SURVEY  
 01 JULY 2019

**Sheet Reference Number**  
 2 of 2